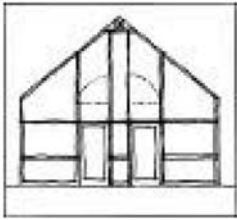


Getting to Donham and Sweeney, Inc.

Directions by Car to Boston Office

From the North:

1. I93 South to the tunnel.
2. Take South Station Exit (20A)
3. Continue three blocks on Surface Road.
4. Turn right onto Kneeland St.
5. Turn right onto Tyler St.
6. Turn left onto Beach St.
7. Turn left onto Harrison Ave.
8. #68 is the second building on the left, 5th floor



Donham & Sweeney, Inc.
68 Harrison Avenue
5th Floor
Boston, MA 02111

Telephone: 617-423-1400
Fax: 617-423-2939

From the South or West:

1. Take Exit 24A, South Station/Chinatown
2. At the end of the ramp, take a left onto Kneeland Street
3. Turn right at fourth light onto Tyler Street
4. Turn left onto Beach Street
5. Take first left onto Harrison Avenue
6. #68 is the second building on the left, 5th floor

Parking for Boston Office:

Parking meters on Beach Street or Beach Street Garage across Harrison Ave. and in the surface lot on Harrison Ave. next to our building.

Directions by Public Transportation to Boston Office

Green Line:

Get off at Boylston stop. Make left onto Boylston St. Go one block past intersection with Washington St., then make right onto Harrison Ave.

Orange Line:

Get off at Chinatown stop. Take Essex St. one block, then make right onto Harrison Ave.

Red Line:

Get off at Downtown Crossing at forward end of the platform. Follow Chauncy St. which will turn into Harrison Avenue.

South Station:

From front of Bus Station on Atlantic Ave., follow Beach St. to Harrison Ave., then make left onto Harrison Ave.

Directions to Office in Alna, Maine

From the South:

1. Take Coastal Route 1 to Wiscasset
2. Take a left on Rt. 218 North
3. After 8.8 miles, take a right on Head Tide Road
4. After 200 yards and before crossing a bridge, take a right onto Head Tide Church Road.
5. The Office is the first building on the left.